



VITRINA[®]
TURÍSTICA
ANATO 2021

BIOSECURITY MEASURES

FOR EXHIBITORS, VISITORS AND SUPPLIER

ANATO, as an organizer of the **40 VITRINA TURÍSTICA – ANATO 2021**, have prepared some considerations and recommendations based on the general biosecurity measures pointed by the Colombian Government, Ministerio de Salud y Protección Social and OMS (Organización Mundial de la Salud), in collaboration with Corferias as the event base.

Those statements will provide a safer environment so your target will be having successful business.

Below you will find in detailed all the health and security measures during every stage of the event:

NOTE: Those statements can have some changes according to the sanitary authorities' recommendations.

General Considerations:



Everyone with no exception at Corferias must respect the measures included in this document, also the instructions and/or recommendations notified by any media (memos, signage, letters, etc.).



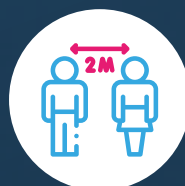
Using facemask will be mandatory inside Corferias facilities as a personal protection measure and will not be allowed to take it off anytime you stay in the event. Not accomplishing this measure, will be a justified cause to be removed from the event.



Element such as scarves, collars, etc., will not be considered as a facemask.



Please have in mind that using plastic masks does not avoid the permanent use of the facemask.



It is mandatory the minimal social distancing of 2 meters, in the entrance and also inside the event facility.



The capacity of the space will be limited, taking into account the epidemiological evolution advised by the government related to all the event areas. This measure will be implemented in order to control and guarantee the personal distancing. It will be signposted and strictly controlled by technological equipment.

Everyone must accomplish those regulations, because the access will be limited to pavilions, conference rooms and public areas, if the capacity exceed the limit.



The space distributions and personal circulation will be organized in order to guarantee a secure social distancing. One-way route will be established in order to guide the circulation for the attendees and avoid crowds, marking the entrance and exit doors.



The capacity in the bathrooms will be limited, with the purpose to respect the minimal social distancing.



Avoid crowds, respecting strictly the access signages and public areas.



We encourage the no contact policy for all the attendees and suppliers of the event.





At Corferias you will find specific signaling with all the sanitary and security recommendations, additionally trained staff will be working on the correct visitors' flow.



Hands cleaning must be practiced, reason why some handwash points and disinfection stations with hand sanitizer or glycerinated alcohol at 60% will be placed strategically.



Carpets will be placed in order to have a proper shoes disinfection process in the different access points, it will be mandatory.



It will be mandatory to deposit used facemasks and gloves in the trash cans disposed for that purpose.



The signage of the participation contract or the entry accreditation acquisition for Exhibitors and Visitors, will be taken as the acceptance and knowledge of the sanitary measures noticed in those documents.





Prior to the event, Exhibitors, Suppliers and Professional Visitors, must know the biosecurity measures already established for all the participants, which will be posted at the event website www.vitrinaturistica.anato.org.



Participants must not attend the event if they have any flu symptom such as cough, breath difficulty, fever, loss of taste or smell, sore throat or headache.



Please report prior or after the event if you have any symptom related to Covid-19.



Register and Event Access control:



In order to have a faster access to Corferias and with the purpose to guarantee a biosecure environment avoiding exhausting lines, it will be necessary to get previously your accreditation through the online register at the event website.



Once you have completed the register process, you can download your badge and print it in PDF format. You can show this badge at the entrance and have access directly to the event.



In the case the accreditation process is enable during the days of the event, you must pay with credit or debit card directly at the ticket point, with the purpose to avoid physical contact.





When you access to Corferias, daily will be requested some information to all the attendees (age, health background, health current status, etc.).



Prior to the access to Corferias, it will be mandatory for all the attendees the corporal temperature measure through the respective procedure established for this purpose. Refusing this process will not allow you to have access to the event.



If the participant temperature exceeds the minimal temperature established (38°C / 100°F), it will not be allowed your access to the event and the case will be reported to the authorities in charge.



It is recommended to download and use the Coronapp mobile application.

Additional Measures for EXHIBITOR'S:



As Exhibitor, you should be informed about our Assembling and Security Regulations disposed for you at the Exhibitors section.



We advise to avoid providing any kind of promotional brochures or printed documents, with the purpose to reduce physical materials manipulation by the Exhibitors and Visitors.



Just in case, it is strictly necessary to provide any kind of physical promotional material, it is important to have it registered and apply the cleaning and disinfection protocols.



We suggest to implement a professional interchange of data, through no contact technology.

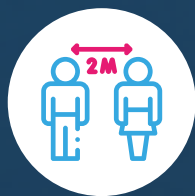


Each exhibitor and supplier company, must guarantee the monitoring and accomplishment of the established biosecurity measures.





Only packaged food items under the sanitary regulations can be delivered. It will NOT be allowed to consume any kind of food inside the booths.



It is mandatory to preserve the social distancing inside the booths anytime, among Exhibitors and Visitors.



It is strictly recommended to practice, the corporal temperature measure to all the personnel who have access to your booth.



To have an adequate waste control in the booth, we suggest you have your own trash cans inside the booth and keep them empty frequently by the use of the containers available on site.



It will be mandatory to deposit tissues, facemask or any other kind of disposable material in the trash cans disposed for that purpose.



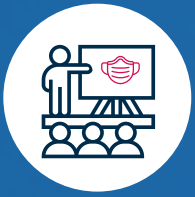
Assembly



Suppliers must sign a Responsibility Statement about the accomplishment of all the biosecurity measures contained in this document and any other that can be added later, will be notified and accomplish in a mandatory manner by all the staff.



It is essential to have a daily report about the health status and have the proof of payment for the health service provider during the assembling and disassembling process.



Assembly companies must train and sensitize their staff about biosecurity topics.



The booth assembling must allow the natural appropriate ventilation flow. Avoid closed space designs.



It is essential to certify the equipment and tool disinfection before accessing to the room.



Merchandise Entrance and Departure:

From ports, airports, other Duty-Free Zones and Warehouse 80 - Doors 3, 4 y 6



The attention and trade processes will be virtually. Please request your virtual assistance or appointment to have a direct attention from the Corferias staff.



It must be allowed by all the event attendees the sprinkling processes for all the vehicles accessing to the event.



Both the exhibitor and assembly company must have available the supports for the protocols of cleaning and disinfection for the merchandise entering to the venue.



Assembly staff must have a strictly hands wash and disinfection practice frequently before accessing to the venue, eat or go to the bathroom.





Vehicles permanency will be limited only for unloading merchandise. Once this activity is completed, the vehicle must leave the venue with no exceptions.



The warehouse capacity must be respected, as well as the service offices, bathrooms and public areas.



It is essential to accomplish the access schedules assigned in order to avoid crowds.



Food and Beverage Service



As long as it is not approved by the authority in charge, it will not be allowed to have cocktails, tastings or similar events, associated with the fair activity. In any case, the event organizers could deny the access or ask for leaving the venue to the suppliers practicing this kind of activities.



Food and beverages from meal points must be cooked, prepared and plated according to the regulations.



Food and beverage staff must have all the necessary individual protection equipment such as gloves, face masks and disposable hygienic material.



It will be prioritized the payment by credit or debit card, with the purpose to avoid physical contact. In the same way it will be implemented this payment method in the automatic sale and collection devices, such as vending machines.



In the zones established for the consumption of food, tables and chairs will have a signage according to the current social distancing regulations.



Plenary room and Meeting rooms



Capacity of the spaces will be monitored according to the regulations for each room.



Security and hygiene measures will be standardized for speakers and venue technicians.



Audiovisual staff must be trained about security and hygiene measures.



Parking:



The driver will be the only person who access to the parking.



It is mandatory to accomplish the capacity of the car, bicycles, motorcycles parking, bathrooms and elevators.



Before accessing to the venue, you must have a proper hand wash and disinfection practice and repeat this action frequently during your stay in the event.

Reaction Protocol:



An isolated medical area will be available for all the event attendees.



A coordination protocol will be established with the sanitary authorities, state security forces and the event organization in order to face any incident.



Once the corporate temperature measure is done, in the case that the indicator system shows that the temperature of the person is higher than 38°C / 100°F, this person will be led to have a professional medical service, where a second control will be practiced. In the case this situation persists, this person will not be able to access to the event.





Sanitary staff will be placed at the main accesses point for an immediate intervention. For this purpose, some discreet spaces will be installed, where the attention will be private.



Once the person pass to the Corferias professional medical service, will be established a professional relationship doctor-patient that can lead to the collection of personal information that medical actions may deem appropriate. This information will not be available for the Organization, because it will be part of the doctor-patient confidentiality.



Attention and service staff will have all the necessary equipment for individual protection (EPIs).

All measures mentioned in this document can be modified and/or complemented according to the current regulation, if it is determined. Newness will be notified opportunely.

Carrera 19 B No. 83 – 63 Piso 8, Edificio ANATO. Tel.: (57-1) 4322040

E-mail: eventos@anato.org

www.vitrinaturistica.anato.org - www.anato.org

 Anato nacional

 @AnatoNacional

 @anato_nacional